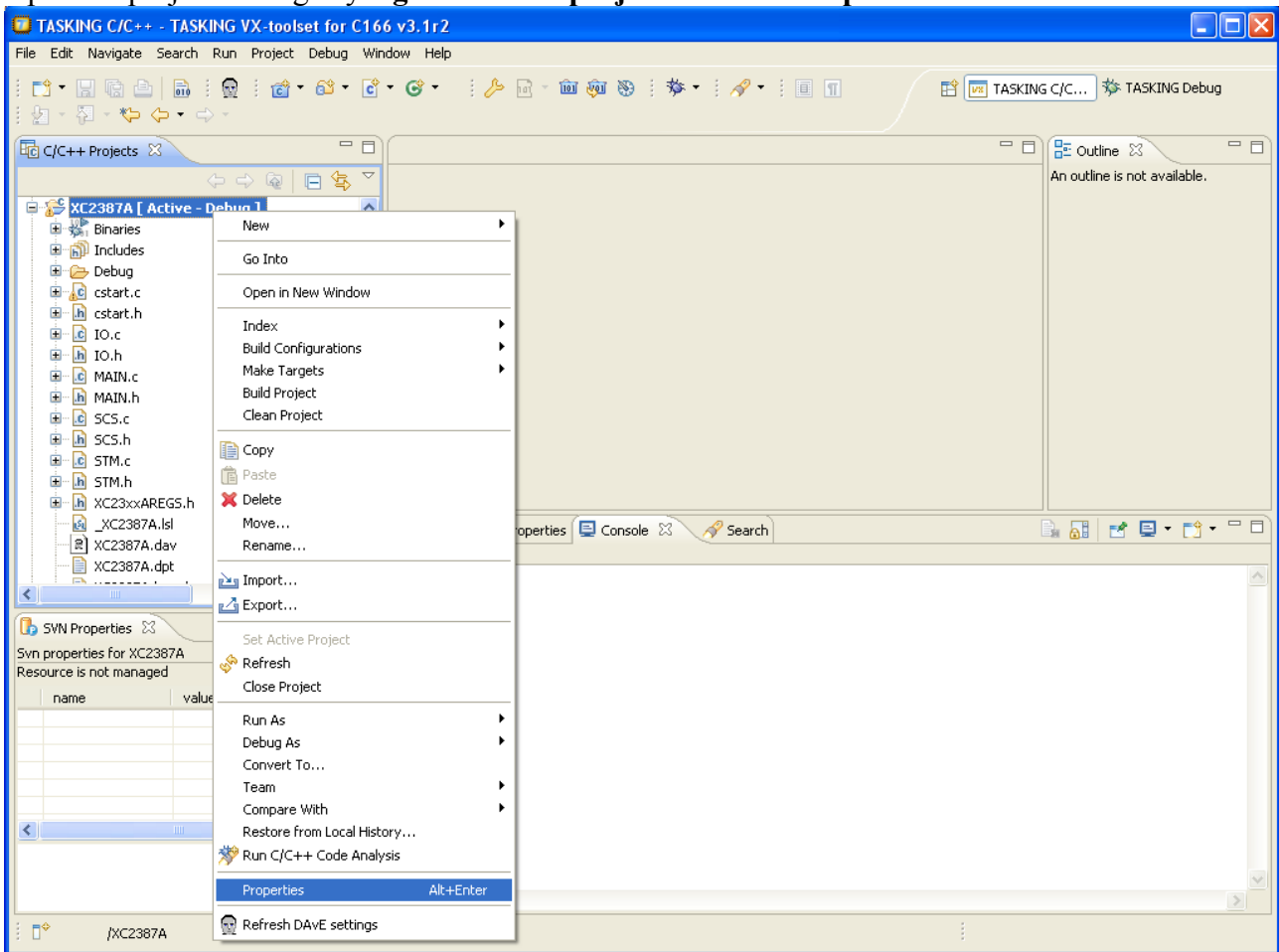


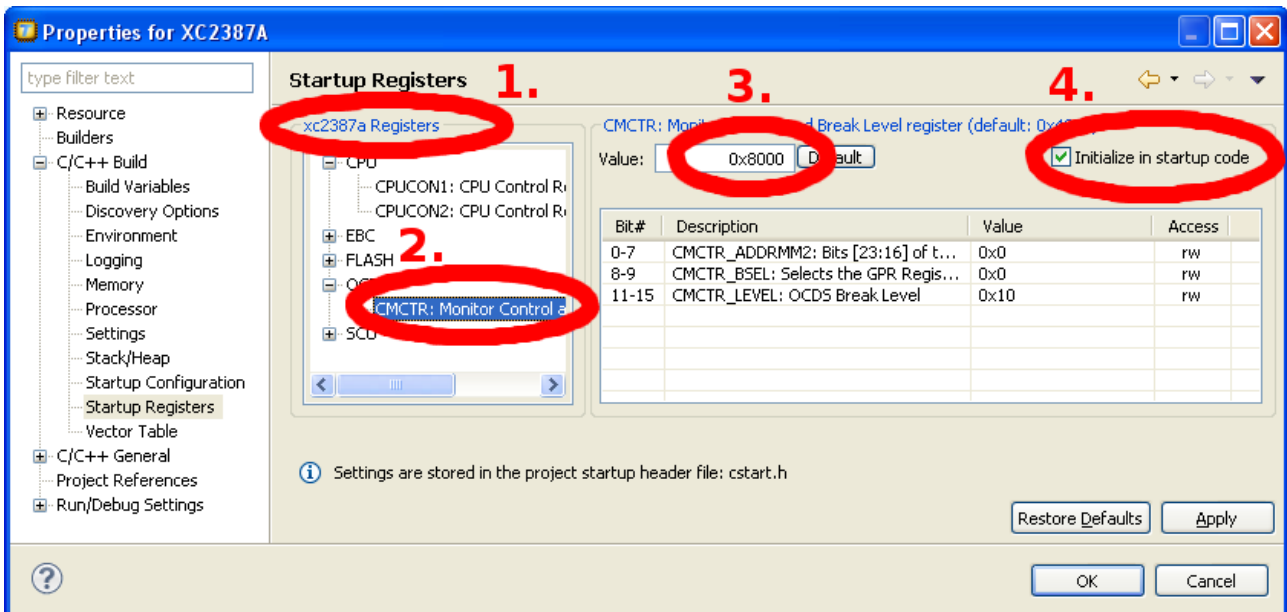
# TASKING-C166 Debug Settings

(C) 2013 Friedrich Lobenstock <fl@fl.priv.at>

Open the project settings by **right-click the project** and select **Properties**:



Under "C/C++ Build" select "Startup Registers". Then select the **CMCTR** register and initialize its value to **0x8000**.



Inspired by [http://www.infineonic.org/bbs/article\\_1149\\_190272.html](http://www.infineonic.org/bbs/article_1149_190272.html)