

The following are the prerequisite for the installation of the DAVE™ SDK version 4

Computer	PC with Windows Vista, Windows 7, Windows 8.1, Windows 10 – 64bit
RAM	4 GB (recommended)

Notes

The installer installs:

- DAVE™ SDK v4.3.2; to modify and develop DAVE™ APPs, build date 2016-08-24.

Installation of DAVE SDK essentially only copies files to a target folder and assigning the software to installed programs. There is no action on windows variables.

It is not possible to update from an earlier DAVE SDK installation to the version 4.3.2.

We recommend to uninstall an earlier DAVE SDK version and install DAVE SDK v4.3.2 as described below.

DAVE SDK v4.3.2 is fully backward compatible to recent earlier version of DAVE SDK. Existing DAVE APPs projects can just be imported in the new DAVE SDK v4.3.2

DAVE and DAVE SDK should be always used in the same version.

Feedback is appreciated, please send feedback to: dave@infineon.com or post it on the [DAVE™ Forum](#) or file a [ticket](#).

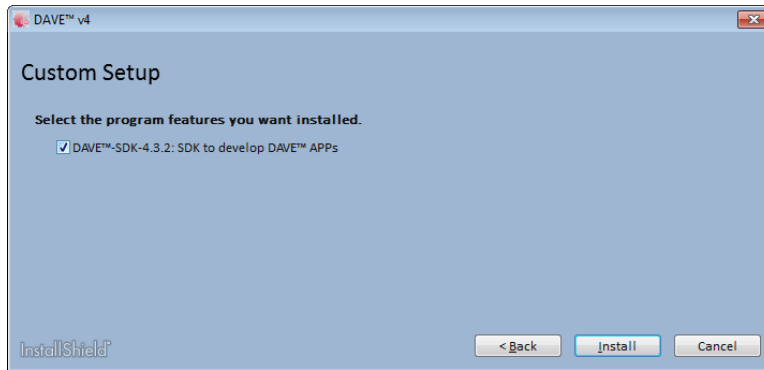
Sections in this Document

1. [Procedure to install DAVE™ SDK version 4.3.2](#)
2. [Procedure to update of DAVE™ SDK](#)
3. [Hints in case of network errors](#)

1. Procedure to Install DAVE™ SDK version 4.3.2:

1.1 Start “DAVE-SDK-4.3.2_Setup_win64.exe”

1.2 Follow the Instructions of the installation wizards,



1.3 After finishing the installation following entries/shortcuts are created

Start -> All Programs -> DAVE-SDK-4.3.2-64Bit
 \DAVE-SDK-4.3.2-64Bit
 \Uninstall DAVE-SDK-4.3.2-64Bit

DAVE-SDK-4.3.2-64Bit desktop shortcut

2. Procedure to update of DAVE™ SDK

It is not possible to update from an earlier DAVE SDK installation to the version 4.3.2.

We recommend to uninstall and earlier and install DAVE SDK as described above.

After installation of DAVE SDK v4.3.2 we propose to check for updates as described in below to ensure possible patch updates gets installed.

2.1 Start DAVE-SDK by one of these methods:

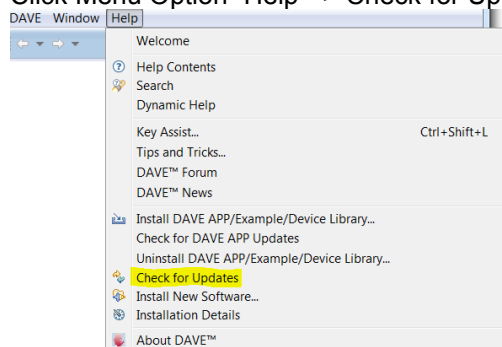
- Desktop shortcut “DAVE-SDK-4.3.2-64Bit
- Start -> All Programs -> DAVE-SDK-4.3.2-64Bit -> DAVE-SDK-4.3.2.exe

2.2 Select a workspace folder.

Please create a new workspace the first time you start DAVE v4.

2.3 Check for updates of DAVE SDK

Click Menu Option “Help -> Check for Updates”

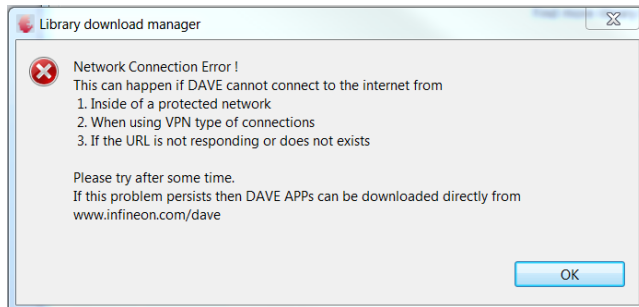


If an update is available, chose all shown options.

3. Hints in case of network errors

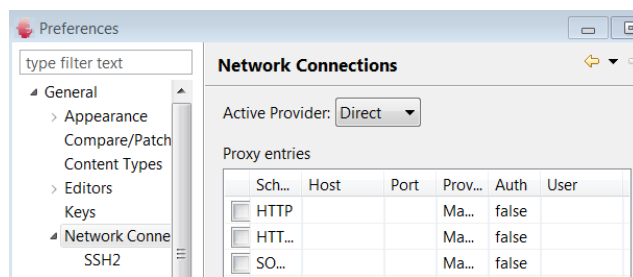
When working within a private network or with a VPN type of connection with secured proxies to the internet, different type of network connection settings may be required.

In this case a connection fail message is asserted:

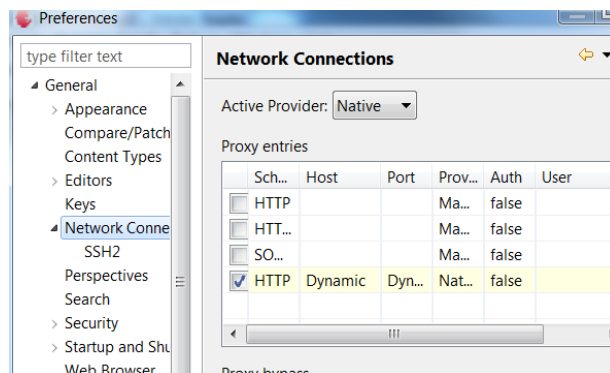


The network connection setting can be changed as following:

Click “Window”, “Preferences”, ->General ->Network Connections



Select “Direct” in case you are directly connected to the internet.



Select “Native” and check the HTTP dynamic host option if you are connected to the internet via a VPN connection or via a proxy server.

Further information including a quick start tutorial can be found in the user manual located in the help content of DAVE SDK.

Various tutorials can be found on the [XMC Mediathek](#).

The DAVE SDK APP projects from the latest DAVE APP release can be downloaded from [here](#).

Legal Disclaimer The information given in this document shall in no event be regarded as a guarantee of conditions or characteristics. With respect to any examples or hints given herein, any typical values stated herein and/or any information regarding the application of the device, Infineon Technologies hereby disclaims any and all warranties and liabilities of any kind, including without limitation, warranties of non-infringement of intellectual property rights of any third party.

Information For further information on technology, delivery terms and conditions and prices, please contact the nearest Infineon Technologies Office (www.infineon.com).

Warnings Due to technical requirements, components may contain dangerous substances. For information on the types in question, please contact the nearest Infineon Technologies Office. Infineon Technologies components may be used in life-support devices or systems only with the express written approval of Infineon Technologies, if a failure of such components can reasonably be expected to cause the failure of that life-support device or system or to affect the safety or effectiveness of that device or system. Life support devices or systems are intended to be implanted in the human body or to support and/or maintain and sustain and/or protect human life. If they fail, it is reasonable to assume that the health of the user or other persons may be endangered.